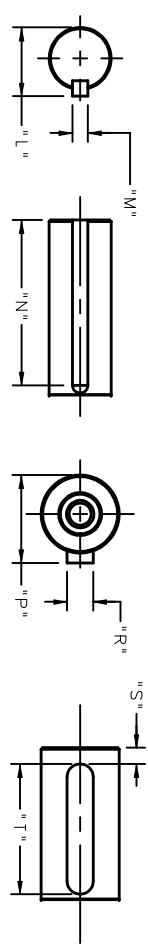


MOUNTING CODE	"C"	"D"	"E"	"F"	"H"	"J"	"K"	"L"	"M"	"N"	"P"	"R"	"S"	"T"	"U"	"V"	"W"
AC	4.80 [1.89]	40.20 [15.748]	63.0 [2.480]	74.0 [2.913]	DS M3 DIN 332	9.45 [3.740]	20.0 [7.9]	N/A	N/A	N/A	10.2 [4.02]	3.0 [1.18]	3.10 [1.22]	12.0 [4.72]	0.030 [0.011]	0.080 [0.023]	0.060 [0.023]
AN	4.80 [1.89]	40.20 [15.748]	63.0 [2.480]	74.0 [2.913]	DS M3 DIN 332	9.45 [3.740]	20.0 [7.9]	N/A	N/A	N/A	10.2 [4.02]	3.0 [1.18]	3.10 [1.22]	12.0 [4.72]	0.030 [0.011]	0.080 [0.023]	0.060 [0.023]
BN	5.10 [2.01]	38.10 [1.500]	66.6 [2.622]	74.0 [2.913]	DS M3 DIN 332	9.525 [3.743]	31.25 [1.250]	N/A	N/A	N/A	N/A	N/A	N/A	N/A	0.035 [0.013]	0.080 [0.031]	0.060 [0.023]
CK	5.80 [2.28]	50.0 [1.9685]	70.0 [2.756]	N/A	N/A	14.0 [5.512]	30.0 [1.181]	16.0 [6.30]	5.0 [1.97]	N/A	N/A	N/A	N/A	N/A	0.035 [0.013]	0.080 [0.031]	0.060 [0.023]
DC	5.80 [2.28]	40.20 [1.5748]	66.6 [2.622]	N/A	DS M3 DIN 332	9.45 [3.740]	20.0 [7.9]	N/A	N/A	N/A	10.2 [4.02]	3.0 [1.18]	3.10 [1.22]	12.0 [4.72]	0.030 [0.011]	0.080 [0.023]	0.060 [0.023]
DN	5.80 [2.28]	40.20 [1.5748]	66.6 [2.622]	N/A	DS M3 DIN 332	9.45 [3.740]	20.0 [7.9]	N/A	N/A	N/A	10.2 [4.02]	3.0 [1.18]	3.10 [1.22]	12.0 [4.72]	0.030 [0.011]	0.080 [0.023]	0.060 [0.023]

KEYWAY DETAILS



CAUTION: METRIC DIMENSIONS ARE REFERENCE ONLY

TOLERANCES	SCALE FULL DIM. SIZE C	THIRD ANGLE PROJECTION
ASSEMBLY DIMENSIONS	1:1	
KEYWAY DIMENSIONS	1:1	
SHAFT DIMENSIONS	1:1	
ONE PLACE	0.1/0.1	
TWO PLACES	0.05/0.05	
THREE PLACES	0.02/0.02	
FOUR PLACES	0.01/0.01	

THIS DRAWING COVERS A PRODUCT NOT COVERED BY THE PROPERT OF DANMOR. THIS DRAWING IS NOT TO BE USED WITHIN FROM APPROVAL.

DATE: 06/26/03

DESIGNER: [] CHECKER: []

STANDARD OUTLINE

AKM2

MODEL	X MAX. (WITH RESOLVER)	Y MAX. (W/SFD OR ENCODER)	Z MAX. (W/BRAKE)
M21	86.2 [3.39]	95.4 [3.76]	129.5 [5.10]
M22	105.2 [4.14]	114.4 [4.50]	148.5 [5.85]
M23	124.2 [4.89]	133.4 [5.25]	167.5 [6.59]
M24	143.2 [5.64]	152.4 [6.00]	186.5 [7.34]