

## SC11...14 - Permanent Magnet DC Servo Motors up to 0.7Nm

The new **SC series** of DC Servomotors offer high performance in a compact design.

They are particularly suited to low torque high-speed applications where brushless systems are too costly or complex.

We offer a complete range of suitable servo drives and complete drive and control systems.



### Features

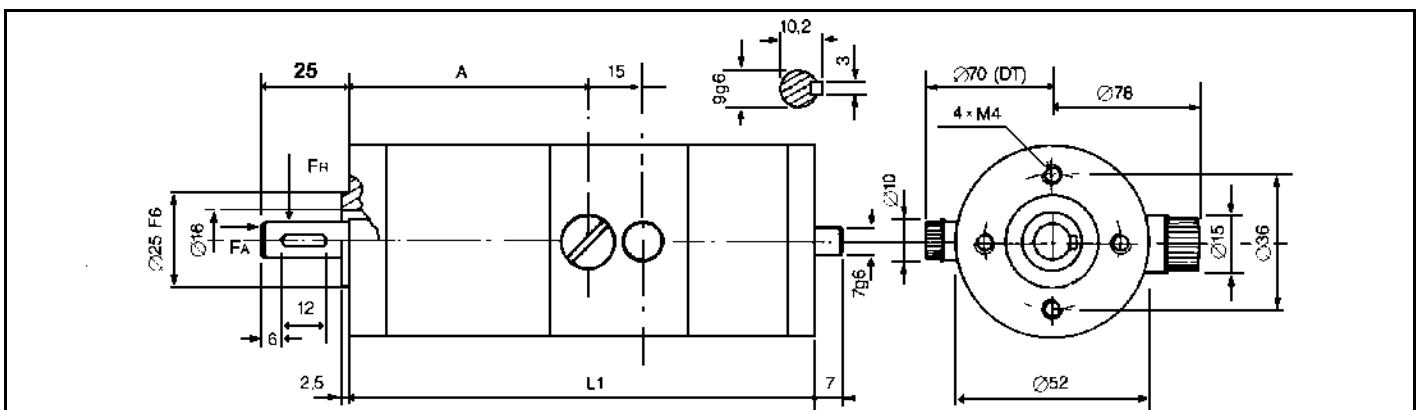
- Servo performance at low cost
- Rare earth magnets
- Motor temperature to 130°C
- Compact 52 mm motors designed and built for continuous duty
- IP44

### Accessories

- Tachometer (5V/1000rpm)
- In Line Planetary Gearboxes (Series BGT)
- Encoders (Series EH53)
- Holding Brake (24Vdc / 0.75Nm)
- Suitable DC Servo Drives

Technical Data	SYMBOL	UNIT	SC 11	SC 12	SC 13	SC 14
Cont. Stall Torque	$M_o$	Nm	0.2	0.4	0.55	0.7
Cont. Stall Current	$I_o$	A	3.2	4.4	4.4	4.9
Peak Current	$I_{max}$	A	20	26	26	28
Peak Torque	$M_{max}$	Nm	1.2	2.4	3.3	4
Max. Speed	$N_{max}$	rpm	8000	6000	6000	5000
Max. Voltage	$V_{max}$	V	60	60	80	80
Voltage Constant	$K_e$	V/1000rpm	6.5	8.7	12.8	14.5
Torque Constant	$K_t$	Nm/A	0.062	0.083	0.122	0.138
Detent Torque	$M_r$	Nm	0.03	0.04	0.05	0.05
Resistance	$R_a$	$\Omega$	1.9	1.4	1.7	1.6
Inductance	L	mH	3	2.3	4	3.5
T-Constant (thermal)	$\tau_1$	min	25	25	30	30
Inertia	J	$10^{-4}$ Kg m <sup>2</sup>	0.4	0.6	0.8	1
T-Constant (mech)	$t_m$	$10^{-3}$ sec	19	12	9	8
Weight (with tach)	m	Kg	1.1	1.3	1.6	1.9
Weight (without tach)	m	Kg	0.8	1	1.3	1.6

### Dimensions



Model	$L_1$ (mm) (no Tacho)	$L_1$ (mm) (with Tacho)	A (mm)	$F_A$ (N) max. Axial Load	$F_R$ (N) max. Radial Load
SC 11	85	127	67	70	280
SC 12	105	147	87	70	280
SC 13	125	167	107	70	280
SC 14	145	187	127	70	280

Please contact us for a full brochure . . .