

Drive Integration

A simple "plug-in" operation, the MC302-K occupies the Kollmorgen Servostar's™ option slot. The module is closely integrated into the drive via a high speed dual port ram interface. The user is given BASIC keywords DRIVE_READ, DRIVE_WRITE, DRIVE_CLEAR, DRIVE_STATUS and DRIVE_RESET to setup and control the drive during operation.



MC302-K Features and Specifications

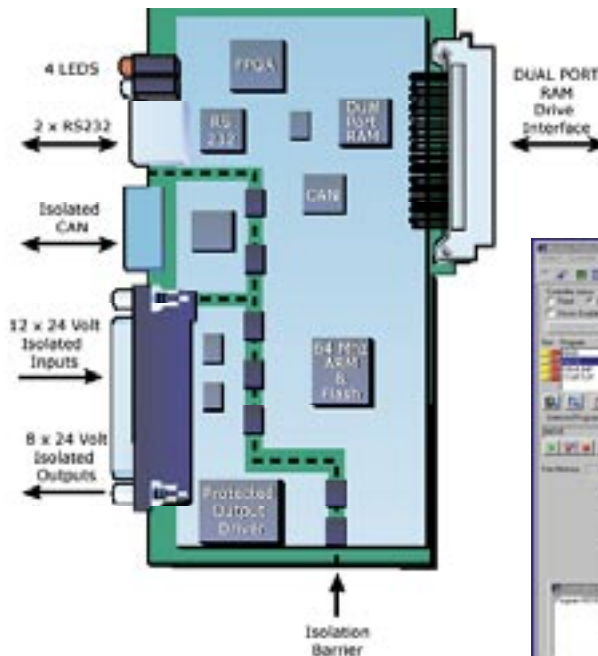
Size:	95mm x 140mm x 20mm
Mounting:	Plug-in card for S600 Option Slot
Weight:	90g
Operating Temp.:	0 to 45 degrees C
Control Inputs:	Forward/Reverse Limit, Datum, Feedhold Assignable
Communications Ports:	CAN interface for DeviceNet, I/O expansion using Trio I/O modules, alternative CAN protocols, etc. 1 x RS232 port for HMI with Modbus RTU + 1 for programming
Position Resolution:	32-bit position count
Synchronisation Encoder:	Via drive auxiliary encoder port
Interpolation Modes:	1-3 axes, Linear, Circular, Helical, CAM profiles, speed control, electronic gearboxes
Programming:	Pre-emptive multi-tasking Trio BASIC, maximum of 3 programs + command line interface
Speed Resolution:	32 bits. Speed/Accel/Decel may be changed at any time. Moves may be merged for continuous contoured motion
Servo Cycle:	250usec
Memory:	120kb user memory. Programs and data can be stored into 16M bit flash EPROM
Power Input:	Supplied by ServoStar Digital Amplifier: 120mA @ 5v
Digital Inputs:	12 opto-isolated + 5 opto-isolated drive inputs
Digital Outputs:	8 opto-isolated + 2 opto-isolated drive outputs
Analog I/O:	2 x 16 bit inputs + 2 x 16 bit outputs from drive

Multi-Tasking TrioBASIC

All Trio **Motion Coordinators** are programmed in TrioBASIC, a flexible yet powerful and easy to use language.

The MC302-K runs up to 3 application programs concurrently using pre-emptive multi-tasking.

The command interface ">>>" also runs concurrently allowing read-back of variables and parameters from the **Motion Coordinator** while programs are running. User programs and System software are stored in flash EPROM.



MC302-K Motion Coordinator

Flexible Motion Control

- Interpolation up to 3 axes
- Circular Interpolation
- Helical Interpolation
- Cam Profiles
- Software Gearboxes
- Linked Movement
- Axis Superimposition
- Imaginary Axes
- Registration

Any Axis can run any move type

Versatile Communications

- 2 x RS232 Serial Port
- Isolated CAN Interface
- MODBUS Communications
- DeviceNet/CANopen Comms

MC302-K Accessories

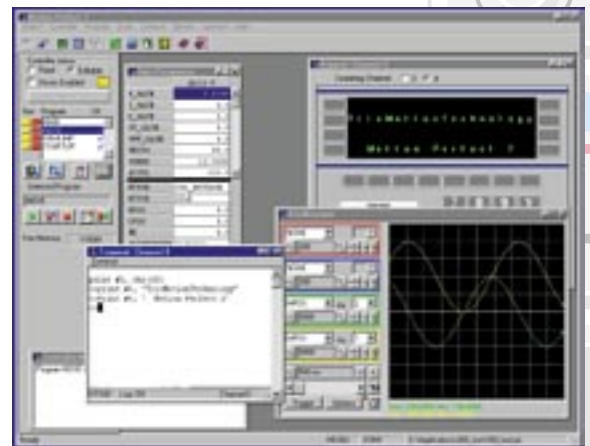
- P315 CAN 16 I/O Module
- P325 CAN 8 Analog Module
- P350 RS232 Serial Cable
- P672 Tech. Reference Manual

EMC Compliant

- BS EN61000-6-2 (1999)
Industrial noise immunity.
- BS EN55022 (1995)
Industrial noise emissions.

Ordering Information

- Product code: P164
MC302-K Motion Coordinator



Trio Motion Technology Ltd:

Trio Motion Technology LLC:

Shannon Way, Tewkesbury, Glos. GL20 8ND. UK

1000 Gamma Drive, Suite 206, Pittsburgh PA 15238, USA.

Tel: +44 1684 292333 Fax: +44 1684 297929

Tel: +1 412.968.9744 Fax: +1 412.968.9746

Email: sales@triomotion.com

Website: www.triomotion.com